

Notify the Public Service Commission (PSC) of Wisconsin of your Concerns about the **Cardinal Hickory Creek** transmission proposal

Potentially impacted landowners, residents and all electric customers have legal right to provide initial, "SCOPING" comments for the PSC's Environmental Impact Statement concerning the proposed 345 kV Cardinal-Hickory Creek (CHC) transmission line. <http://bit.ly/PSC-Scoping> The materials in this packet can help make input more thorough and influential. If you live in or have property in an area potentially impacted by the proposed line, fill out both questionnaire forms and write a summary cover letter. If you are affected primarily as an electric customer, fill out the "Energy Investment Priorities" form with an optional cover letter. Some town, village and city governments, organizations and intervenors are sponsoring sessions to help constituents prepare their written input. **Important:** Make a high quality copy of your signed materials before submitting them at PSC scoping meetings or sending them via mail/email so they can be posted to the publicly accessible docket. It is best to submit forms by December 15, 2018. *All electric customers in the Midwest* can fill out the "Energy Investment Priorities" form in this packet: <http://bit.ly/CHC-SCOPING-PACKET>

Environmental Impacts – Questionnaire Form (use back if necessary)

List all sensitivities that would be affected by a high-profile transmission line on land that you own, rent or visit. Sensitivities include springs, streams, rivers, ponds, lakes, dams, caves, wetlands, sinkholes, animal dens, sightings of unusual animals and plants including songbirds, raptors waterfowl, amphibians, reptiles and mammals. List presence of housing, work areas, livestock, crops, forestland, grassland, recreation land and animal containment areas. If a map is available, letter each sensitivity and add a letter to the corresponding location on the map. You can make your own map by zooming in on the property on the transmission builders' interactive map <http://arcg.is/2zCXZDI> and taking a screen shot <http://bit.ly/How2Screen>

Economic Impacts – Tourism - Questionnaire Form (use back if necessary)

List all businesses that would be affected by a decrease in tourism including fishing, hunting, canoeing, kayaking, biking, motorbike touring, wildlife sighting, hiking, jogging, picnicking, photography, camping, snowmobiling, skiing, horseback riding, golfing and attractions like museums, parks, wildlife refuges, nature centers, restaurants, motels, hotels, bed and breakfasts, grocery stores, taverns, gasoline stations, drug stores, resale/antique stores, art/craft galleries, convenience stores, roadside stands, and touring services. If you are mapping, letter each listed sensitivity and add a letter to the corresponding location on your map.

Impacts on Housing and Business Development - Questionnaire Form (use back if necessary)

List and map locations where houses and businesses have been developed over the last 10 years. Include and describe locations with known development ambitions.

Cultural Impacts – Questionnaire Form (use back if necessary)

List and map all known and suspected historical or archeological sites of interest such as cemeteries, churches, places of worship, old homesteads, pony express stops, post offices, schools, wells, artesian springs, hunting and ceremonial grounds. Folklore associated with locations can also be mentioned.

Health Concerns – Questionnaire Form (use back if necessary)

List and map locations where young, elderly and all persons with special sensitivities and needs reside or frequent including homes, schools, workplaces, schools, assisted living centers, senior citizen centers, hospitals, health centers, medical centers, community centers, libraries, bus stops, rest areas, parks, festivity grounds, civic centers and government offices. More information here: http://bit.ly/Health_Impacts

Cover Letter: Include your credentials

Your family's ties to and history in affected communities are important to describe at the start of your cover letter summarizing your concerns. Include your address and sign it. Mention current and past positions of responsibility held including volunteer work, professional skills and elected/appointed office.

Energy Spending Priorities - Both Questionnaire Forms

In denying the transmission line option, the PSC Commissioners must select another option. The questions on these forms encourage and better enable the PSC Commissioners abiding in public interest and choosing investment in Non-Transmission Alternatives (NTA's) instead. Benefits from NTA's: <http://bit.ly/NTA-Instead>

Last Name _____ First Name _____

EIS SCOPING INPUT

[] Individual [] Family [] Business [] Frequent Visitor

DOCKET 5-CE-146 Cardinal Hickory Creek

Submit at scoping meeting or send to:

Public Service Commission of Wisconsin
 Cindy Burtley Scoping Input Docket 5-CE-146
 4822 Madison Yards Way
 Madison, WI 53705

cindy.burtley@wisconsin.gov

Street Address _____

City _____ Zip _____ Email _____

Years of residence in area: _____ Positions held/services to my community: _____

1. I have marked personal concerns I have about the high voltage transmission option:

Loss of Property Value	Loss/diminished Environmental Assets	Loss of Tourism Related Business	
Loss of Business Income	Effects on Rare & Endangered Habitats	Impacts on Rising Energy Costs	
Effects on Personal Health	Effects on Rare & Endangered Animals	Impacts on Energy Self-Reliance	
Effects on Others Health	Effects on Rare & Endangered Plants	Compromises on Local Economy	
Effects on Livestock	Effects on Raptors & Waterfowl	Loss/diminished Cultural Assets	
Effects of Electromagnetic Fields & Noise	Effects on Activities associated with Surface and Ground Water	Impacts on Religious, Personal Values or Cultural Assets	

2. Itemized concerns about the high voltage transmission proposal by category & location

Sensitivities in the environment I am concerned about: (use reverse side as necessary)	Map Letter or Municipality	
Negative Impacts on Tourism and Residential and Business Development that concern me:	Map Letter or Municipality	
Cultural and Health impacts of concern:	Map Letter or Municipality	
3. Energy Investment Priority	Agree	Disagree
Should additional electric customer spending be deemed necessary in the process of reviewing the Cardinal Hickory Creek transmission proposal (5-CE-146), I <u>oppose</u> the high voltage transmission option and <u>support</u> Non-Transmission Alternatives incorporating enhancements such as energy efficiency, load management and development of local, renewable power.		

Use Reverse Side for Additional Comments

Initial above

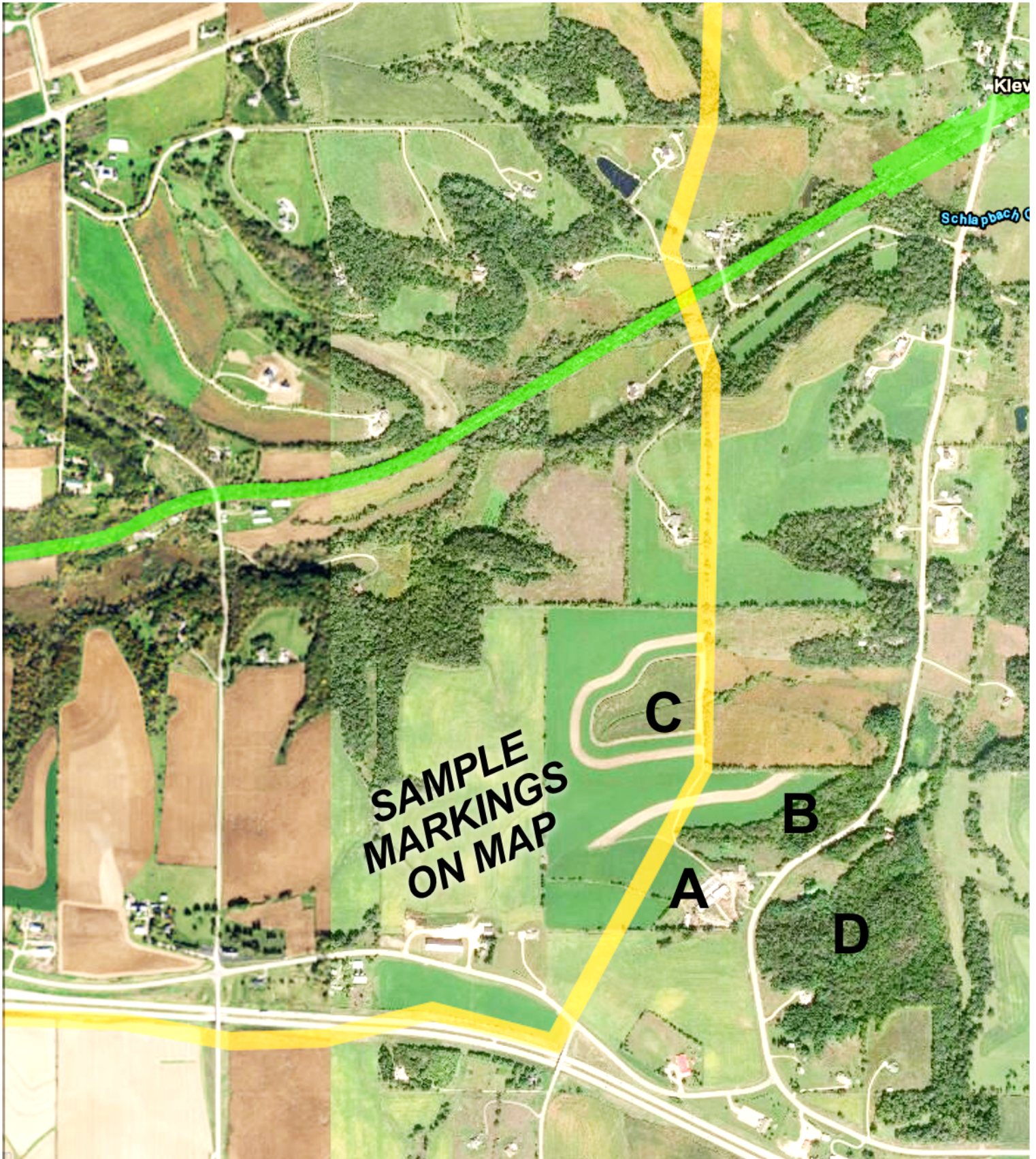
Signature _____ **Date** _____

I signing above, I provide permission to use the above data and comments in the PSC's Environmental Impact Statement.

One can make a personal map to locate concerns on by "zooming in" on your property using the transmission builders' interactive map

<http://arcg.is/2zCXZDI>

And taking a screen shot <http://bit.ly/How2Screen>



Name _____
 Address _____
 City _____ State _____ Zip _____
 Email: _____ Electric Utility _____
 Check all that apply : Home [] Farm [] Business []

ENERGY SPENDING PRIORITIES

SCOPING INPUT- Cardinal Hickory Creek 5-CE-146

Submit at scoping meeting or mail to:

Public Service Commission of Wisconsin
 Cindy Burtley, Scoping Input Docket 5-CE-146
 4822 Madison Yards Way
 Madison, WI 53705 cindy.burtley@wisconsin.gov

Check appropriate box concerning these statements:	Strongly Disagree	Disagree	Neutral No Opinion	Agree	Strongly Agree
We are concerned about rising electricity costs.	[]	[]	[]	[]	[]
Carbon emissions from electric generation is a concern.	[]	[]	[]	[]	[]
We believe that we can reduce our electricity use.	[]	[]	[]	[]	[]
We hope to, eventually, invest in solar at home/business.	[]	[]	[]	[]	[]
Our home/business would benefit from energy improvements.	[]	[]	[]	[]	[]
We have inefficient appliances/equipment that need replacing.	[]	[]	[]	[]	[]
Our home/business is very familiar with Focus on Energy.	[]	[]	[]	[]	[]
Wisconsin energy dollars should stay in Wisconsin.	[]	[]	[]	[]	[]
Our home/business has as impending energy investments. Describe one or more investment you need to make:	[]	[]	[]	[]	[]
Our home/business cannot make necessary investments. Describe one or two investments and the obstacles.	[]	[]	[]	[]	[]

Rank Preferred Energy Investments Rank the following, eight, energy investments for Wisconsin utilities to make should new dollars be requested. Mark "1" for your first preference and "8" for your last preference.

- | | |
|--|--|
| [] Build new, natural gas power plants. | [] Increase rebates for energy efficient appliances and equipment for homes and small businesses. |
| [] Build new, high-capacity transmission lines. | [] Address too frequent power outages in smaller distribution lines |
| [] Increase rebates to help home and business owners make their buildings more weather tight. | [] Build large-scale solar and wind facilities in WI. |
| [] Increase rebates to help home and business owners develop solar at their homes and businesses. | [] Increase rebates to help home and business purchase panels at community solar farms. |

	Agree	Disagree
Should additional electric customer spending be deemed necessary in the process of reviewing the Cardinal Hickory Creek transmission proposal (5-CE-146), I <u>oppose</u> the high voltage transmission spending option and <u>support</u> Non-Transmission Alternatives incorporating enhancements such as energy efficiency, load management and development of local, renewable power.		

Use Reverse Side for Additional Comments

Initial above

Signature _____ Date _____

I signing above, I provide permission to use the above data and comments in the PSC's Environmental Impact Statement.

Submit at PSC scoping meeting or mail/email to:

Public Service Commission of Wisconsin
Scoping Input Docket 5-CE-146 - Cindy Burtley
4822 Madison Yards Way Madison, WI 53705
cindy.burtley@wisconsin.gov

Name _____ Address _____
City _____ State _____ Zip _____ Phone (optional) _____

Email (optional) _____

Scoping period pertaining to the Joint Application of American Transmission Company LLC, ITC Midwest LLC, and Dairyland Power Cooperative, for Authority to Construct and Operate a New 345 kV Transmission Line from the Existing Hickory Creek Substation in Dubuque County, Iowa, to the Existing Cardinal Substation in Dane County, Wisconsin, to be known as the Cardinal-Hickory Creek Project.

Comments

Signature _____ **Date** _____

I signing above, I provide permission to use the above data and comments in the PSC's Environmental Impact Statement.